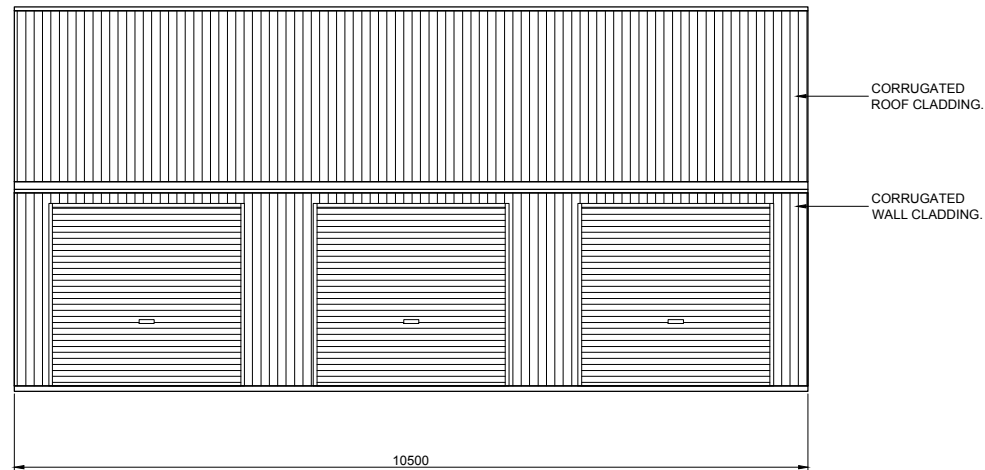
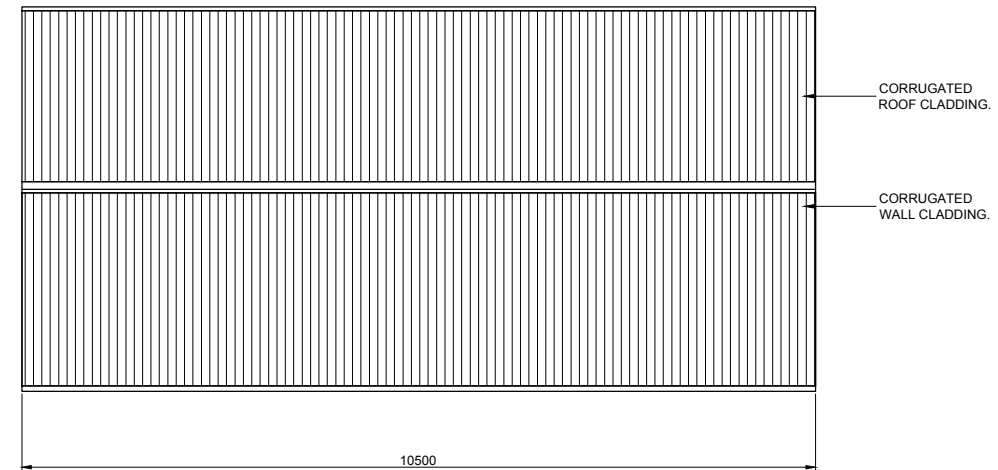


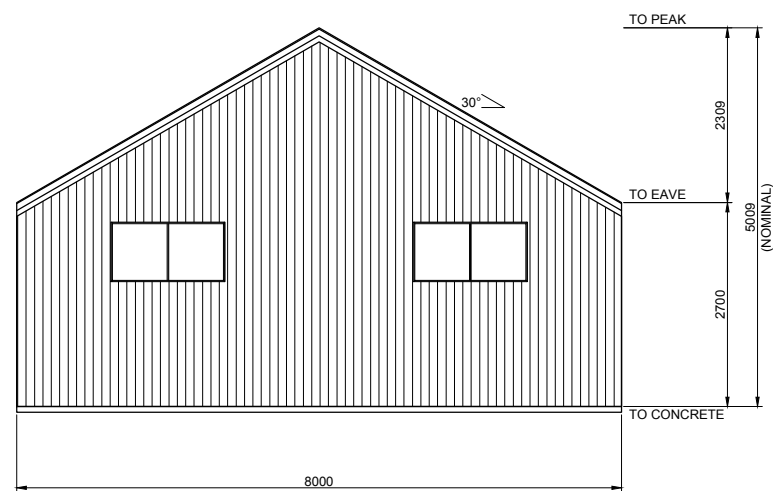
The design and detail shown on these drawings are applicable to this project only and may not be reproduced in whole or any part or be used for any other purpose without the written permission of FBHS (Aust) Pty Limited with whom copyright resides. The local distributor you are dealing with is an authorised independent distributor of Fair Dinkum Sheds' products and enters into agreements with its customers on its own behalf and not as an agent of Fair Dinkum Sheds.



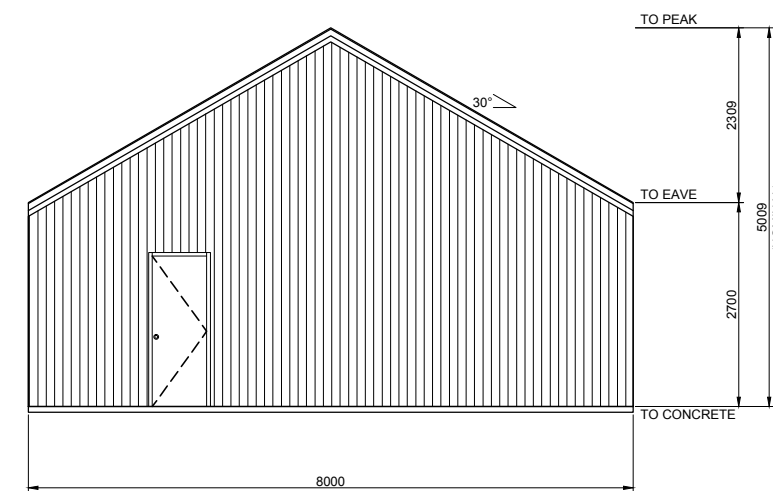
1
6 SIDEWALL EXTERIOR ELEVATION
SCALE: 1 = 100



2
6 SIDEWALL EXTERIOR ELEVATION
SCALE: 1 = 100



4
6 ENDWALL EXTERIOR ELEVATION
SCALE: 1 = 100



3
6 ENDWALL EXTERIOR ELEVATION
SCALE: 1 = 100

BUILDING COLOURS

WALL	MONUMENT
ROOF	MONUMENT
ROLLER DOOR	MONUMENT
P.A. DOOR	MONUMENT
WINDOW	MONUMENT
DOWNPIPE	MONUMENT
GUTTER	MONUMENT
CORNER FLASHING	MONUMENT
BARGE FLASHING	MONUMENT
OPENING FLASHING	MONUMENT

6 OF 7 SHEET

JOB NO. ARM13983
NCC 2019

DATE 21/1/2022

CHECKED TM

DRAWN FDS

STEEL BUILDING BY (CONTACT)
NEW ENGLAND SHEDS
02 6798 9540
MATTHEW GREEN
60 TORBRUK ROAD
INVERGOWRIE

FOR AT



NORTHERN CONSULTING engineers

Civil & Structural Engineers
50 Punari Street
Currajong, Qld 4812
Fax: 07 4725 5850
Email: design@nceng.com.au
ABN 341 008 173 56

Registered Chartered Professional Engineer
Registered Professional Engineer (Civil & Structural) QLD
Registered Certifying Engineer (Structural) N.T.
Registered Engineer - (Civil) VIC
Registered Engineer - (Civil) TAS

Regn. No. 2558980
Regn. No. 9985
Regn. No. 116373ES
Regn. No. EC36692
Regn. No. CC5648M

Mr Timothy Roy Messer BE MIEAust RPEQ

Signature *T. Messer*

Date 21/1/2022

Registered on the NPER in the areas of practice of Civil & Structural National Professional Engineers Register