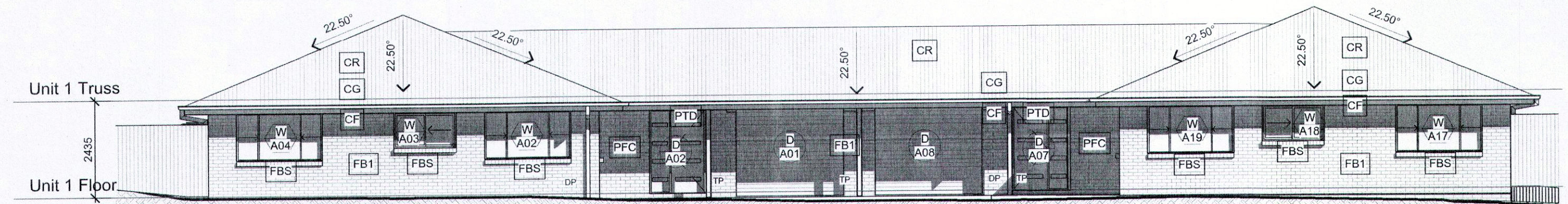
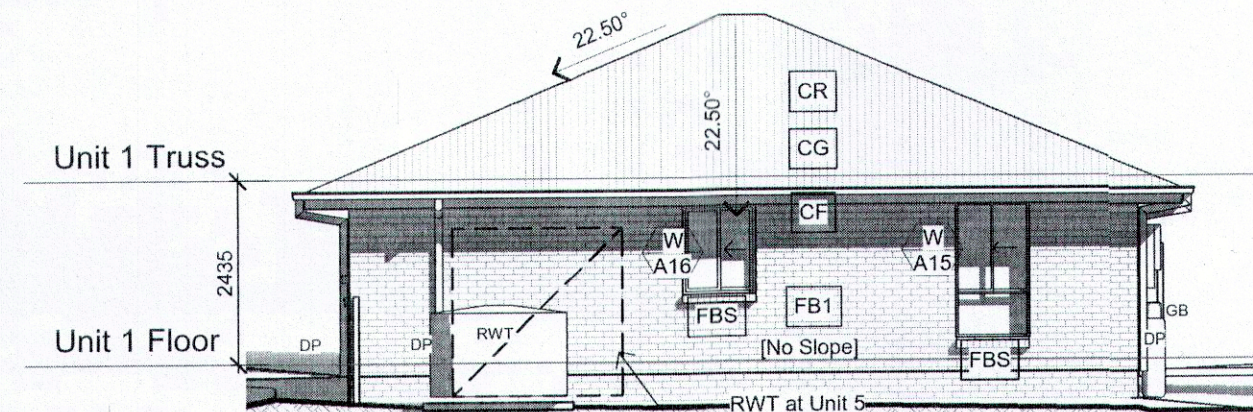


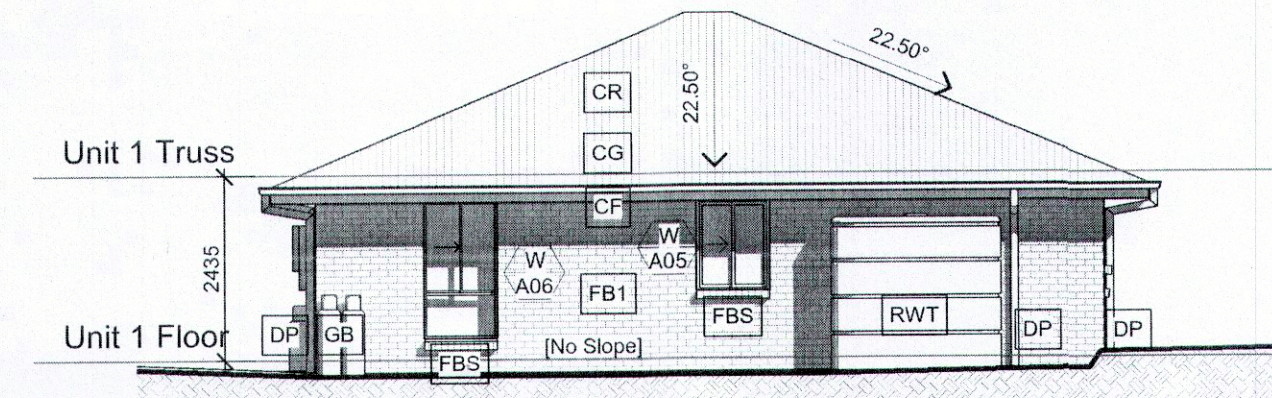
02 Type A North Elevation
A103 1 : 100



04 Type A South Elevation
A103 1 : 100



03 Type A East Elevation
A103 1 : 100



05 Type A West Elevation
A103 1 : 100

Elevations Legend

CF	COLORBOND FASCIAS & BARGE
CG	COLORBOND GUTTERS
CR	COLORBOND ROOF SHEETING
FB2	FACE BRICKWORK AS SPEC. - BRICK 1
FBS	FACE BRICK SILLS - BRICK 2 AS SPEC.
PFC	PAINTED FIBRE CEMENT CLADDING AS SPEC.
PTD	PAINTED TIMBER EXTERNAL / ENTRY DOOR
DP	PAINTED uPVC DOWNPIPES
FCL	FOLDING CLOTHES LINE
GB	GAS BOTTLE LOCATION
HWU	HOT WATER UNIT
MB	METER BOX
RWT	RAINWATER TANK
TP	PAINTED TIMBER POST

NOT FOR CONSTRUCTION		
No.	Date	Revision
1	7/08/19	Issued for Coordination
2	2/09/19	Issued for Coordination
3	18/10/19	Issued for Coordination
4	25/10/19	Preliminary Approvals Drawings for Review
5	30/10/19	Preliminary Approvals Drawings for Coordination
6	11/11/19	Preliminary Approvals Drawings for Review

Sections Legend

- COLORBOND ROOF SHEETING LAID OVER REFLECTIVE FOIL SARKING ON HW BATTENS OVER ROOF TRUSSES
- ENGINEERED TIMBER TRUSSES @ MAX. 900 C.T.C.
- BOXED EAVES - PAINTED 4.5mm FC SOFFIT
- PAINTED 4.5mm FC SOFFIT ON BATTENS TO U/S OF RAFTERS
- COLORBOND FASCIAS & GUTTERS
- POWDERCOATED ALUMINIUM FRAMED WINDOWS & SLIDING DOORS
- HW VERANDAH BEAM AS SCHEDULED
- 120x120 DRESSED HW TIMBER POSTS
- R/CONCRETE SLABS & FOOTINGS TO ENG. DETAIL - SLABS LAID OVER MOISTURE BINDING ON BLINDING
- PAINTED PLASTERBOARD CEILING ON BATTENS TO U/S OF TRUSSES
- PAINTED PLASTERBOARD LININGS TO WALL FRAMES
- CEILING INSULATION TO COMPLY WITH BASIX REQUIREMENTS
- WALL INSULATION TO COMPLY WITH BASIX REQUIREMENTS
- PAINTED FIBRE CEMENT / WEATHERTEX WEATHERBOARDS AS SPEC.
- PAINTED FIBRE CEMENT SHEET ON BATTENS TO TIMBER WALL FRAME AS SPEC.