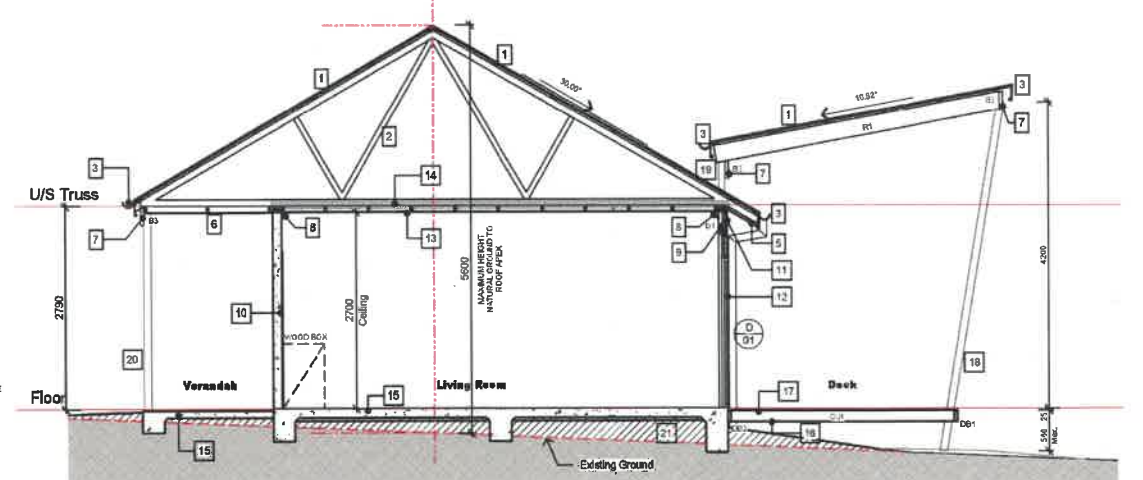
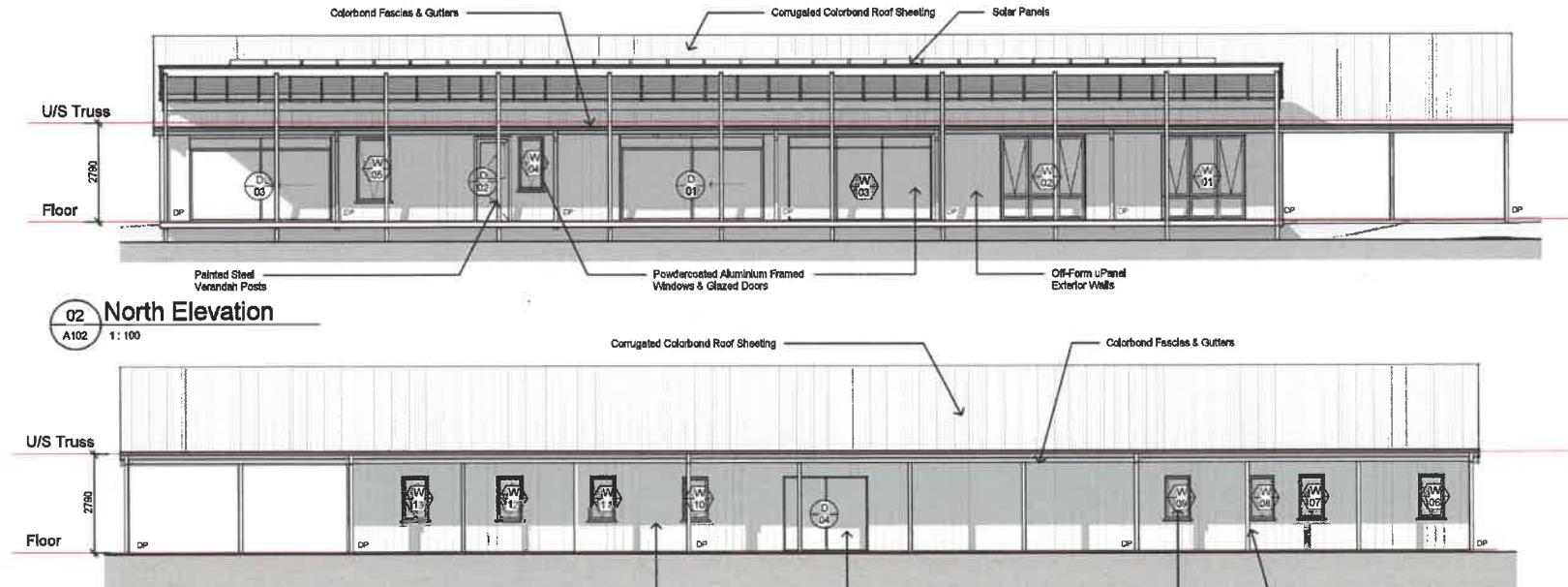


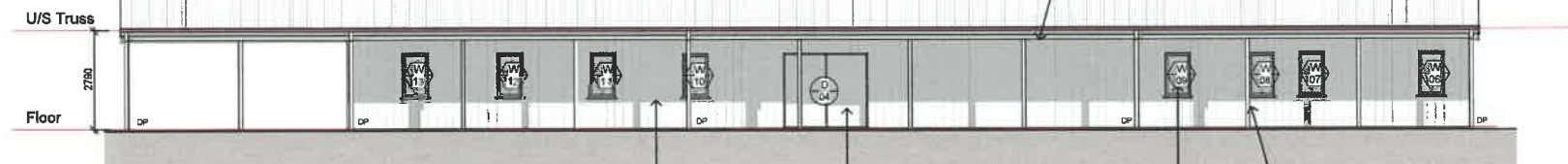
1	CORRUPATED COLOMBROID ROOF SHEETING
2	WALLS TO REFLECT THE RAINING OFF THE
3	ENGINEERED TRUSS BRUSSES
4	COLCORM POLYMER, BRUISES & GUTTERS
5	EXPLODED TRUSS PATTERN AS
6	PAINTED TO RESIST CEMENT SODT LINTS ON
7	PAINT OF TRUSS TALLS
8	PAINTED TO RESIST CEMENT SODT LINTS ON
9	TRUSS BRUSSES TO USE OF TRUSS
10	PAINTED TRUSS BRUSSES AS SCHEDULED
11	FLASTER CORNICE
12	PAINTER WORK IN PLASTERING AND LINTS TO
13	BEHIND OVER JOINT OPENING
14	UPPATEL INTERIOR WALLS & UP FINISHES TO
15	BEHIND OVER JOINT OPENING
16	CORRUPATED COLOMBOID JOINT OPENING
17	EXPLODED ALUMINUM FRAMEWORK DOORS
18	PAINTED WITH PLASTERING & CEMENTS ON
19	PAINTED TO USE OF TRUSS
20	CEILING & INSULATION TO MEET REQUIREMENTS
21	ROCKWOOL FIBERGLASS INSULATION TO
22	MEET REQUIREMENTS
23	PAINTER WORK IN PLASTERING
24	PAINTED TRUSS, SEE DECOR ROOF SUPPORT
25	TRUSS BRUSSES TO RESIST CEMENT
26	TRUSS BRUSSES TO RESIST CEMENT
27	TRUSS BRUSSES TO RESIST CEMENT
28	TRUSS BRUSSES TO RESIST CEMENT
29	TRUSS BRUSSES TO RESIST CEMENT
30	TRUSS BRUSSES TO RESIST CEMENT
31	TRUSS BRUSSES TO RESIST CEMENT
32	TRUSS BRUSSES TO RESIST CEMENT
33	TRUSS BRUSSES TO RESIST CEMENT
34	TRUSS BRUSSES TO RESIST CEMENT
35	TRUSS BRUSSES TO RESIST CEMENT
36	TRUSS BRUSSES TO RESIST CEMENT
37	TRUSS BRUSSES TO RESIST CEMENT
38	TRUSS BRUSSES TO RESIST CEMENT
39	TRUSS BRUSSES TO RESIST CEMENT
40	TRUSS BRUSSES TO RESIST CEMENT
41	TRUSS BRUSSES TO RESIST CEMENT
42	TRUSS BRUSSES TO RESIST CEMENT
43	TRUSS BRUSSES TO RESIST CEMENT
44	TRUSS BRUSSES TO RESIST CEMENT
45	TRUSS BRUSSES TO RESIST CEMENT
46	TRUSS BRUSSES TO RESIST CEMENT
47	TRUSS BRUSSES TO RESIST CEMENT
48	TRUSS BRUSSES TO RESIST CEMENT
49	TRUSS BRUSSES TO RESIST CEMENT
50	TRUSS BRUSSES TO RESIST CEMENT
51	TRUSS BRUSSES TO RESIST CEMENT
52	TRUSS BRUSSES TO RESIST CEMENT
53	TRUSS BRUSSES TO RESIST CEMENT
54	TRUSS BRUSSES TO RESIST CEMENT
55	TRUSS BRUSSES TO RESIST CEMENT
56	TRUSS BRUSSES TO RESIST CEMENT
57	TRUSS BRUSSES TO RESIST CEMENT
58	TRUSS BRUSSES TO RESIST CEMENT
59	TRUSS BRUSSES TO RESIST CEMENT
60	TRUSS BRUSSES TO RESIST CEMENT
61	TRUSS BRUSSES TO RESIST CEMENT
62	TRUSS BRUSSES TO RESIST CEMENT
63	TRUSS BRUSSES TO RESIST CEMENT
64	TRUSS BRUSSES TO RESIST CEMENT
65	TRUSS BRUSSES TO RESIST CEMENT
66	TRUSS BRUSSES TO RESIST CEMENT
67	TRUSS BRUSSES TO RESIST CEMENT
68	TRUSS BRUSSES TO RESIST CEMENT
69	TRUSS BRUSSES TO RESIST CEMENT
70	TRUSS BRUSSES TO RESIST CEMENT
71	TRUSS BRUSSES TO RESIST CEMENT
72	TRUSS BRUSSES TO RESIST CEMENT
73	TRUSS BRUSSES TO RESIST CEMENT
74	TRUSS BRUSSES TO RESIST CEMENT
75	TRUSS BRUSSES TO RESIST CEMENT
76	TRUSS BRUSSES TO RESIST CEMENT
77	TRUSS BRUSSES TO RESIST CEMENT
78	TRUSS BRUSSES TO RESIST CEMENT
79	TRUSS BRUSSES TO RESIST CEMENT
80	TRUSS BRUSSES TO RESIST CEMENT
81	TRUSS BRUSSES TO RESIST CEMENT
82	TRUSS BRUSSES TO RESIST CEMENT
83	TRUSS BRUSSES TO RESIST CEMENT
84	TRUSS BRUSSES TO RESIST CEMENT
85	TRUSS BRUSSES TO RESIST CEMENT
86	TRUSS BRUSSES TO RESIST CEMENT
87	TRUSS BRUSSES TO RESIST CEMENT
88	TRUSS BRUSSES TO RESIST CEMENT
89	TRUSS BRUSSES TO RESIST CEMENT
90	TRUSS BRUSSES TO RESIST CEMENT
91	TRUSS BRUSSES TO RESIST CEMENT
92	TRUSS BRUSSES TO RESIST CEMENT
93	TRUSS BRUSSES TO RESIST CEMENT
94	TRUSS BRUSSES TO RESIST CEMENT
95	TRUSS BRUSSES TO RESIST CEMENT
96	TRUSS BRUSSES TO RESIST CEMENT
97	TRUSS BRUSSES TO RESIST CEMENT
98	TRUSS BRUSSES TO RESIST CEMENT
99	TRUSS BRUSSES TO RESIST CEMENT
100	TRUSS BRUSSES TO RESIST CEMENT



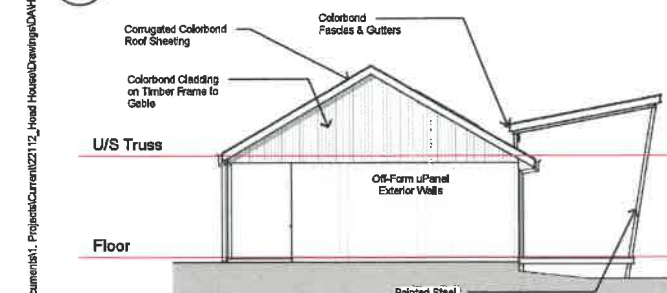
A Section A
A102 1:50



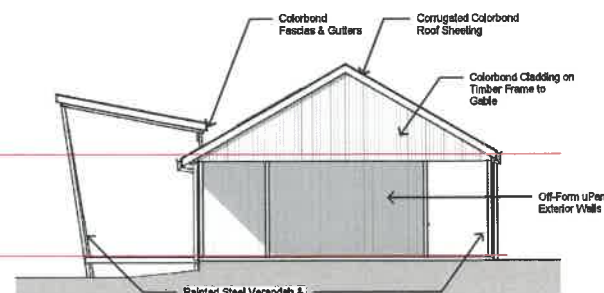
02 North Elevation
A102 1:100



03 South Elevation
A102 1:100



04 East Elevation
A102 1:100



05 West Elevation
A102 1:100



B Section E
A102 1 : 100

Window Schedule								
No.	Window Type	Height	Width	Area	Orientation	Glazing Type	Shading	Comments
01	Aluminum Awning	2400	2400	5.76 m ²	E	Double Glaz	Fixed Slats	
02	Aluminum Awning	2400	2400	5.76 m ²	E	Double Glaz	Fixed Slats	
03	Aluminum Fixed	2400	4000	9.60 m ²	E	Double Glaz	Fixed Slats	Exposure to SW Wind
04	Aluminum Awning	1500	720	1.08 m ²	E	Double Glaz	Fixed Slats	
05	Aluminum Awning	1500	960	1.44 m ²	E	Double Glaz	Fixed Slats	
06	Aluminum Awning	1500	720	0.86 m ²	E	Double Glaz	Fixed Slats	
07	Aluminum Awning	1200	720	0.86 m ²	E	Double Glaz	Fixed Slats	
08	Aluminum Awning	1200	720	0.86 m ²	E	Double Glaz	Fixed Slats	
09	Aluminum Awning	1200	720	0.86 m ²	E	Double Glaz	Fixed Slats	
10	Aluminum Awning	1200	720	0.86 m ²	E	Double Glaz	Fixed Slats	
11	Aluminum Awning	1200	720	0.86 m ²	E	Double Glaz	Fixed Slats	
12	Aluminum Awning	1200	720	0.86 m ²	E	Double Glaz	Fixed Slats	
13	Aluminum Awning	1200	720	0.86 m ²	E	Double Glaz	Fixed Slats	

Door Schedule								
No.	Door Type	Height	Width	Area	Orientation	Glazing Type	Shading	Comments
01	Aluminum Glazed Entry Door	2400	4800	4.75 m ²	N	Aluminum Glazed	Screened	2100 High Door + 30mm Transom
02	Full Glazed Entry Door	2400	4800	2.38 m ²	N	Aluminum Glazed	Screened	2100 High Door + 30mm Transom
03	Aluminum Glazed Entry Door	2400	4800	5.75 m ²	N	Aluminum Glazed	Screened	2100 High Door + 30mm Transom

DO NOT SCALE
USE FIGURED DIMENSIONS ONLY

Pricing processes may cause the scale of this drawing to be inaccurate. The Contractor must verify all dimensions on site before commencing any work or preparing shop drawings.

The Building Design and this drawing is a copyright and remains the property of
NEW ENGLAND DESIGN GROUP
Unauthorized reproduction is prohibited
COPYRIGHT ©



**BUILDING DESIGNERS
ASSOCIATION OF AUSTRALIA**

Proposed Secondary Dwelling
91 Mihi Road, Mihi NSW
For Mr. Justin Hoad

Floor Plan, Elevations, Sections, Schedules

Designed	PH	Drawn	ANE
Scale	As indicated	Project Phase	DA
Date	November 2022	Drawing Number	22112
Approved	PH		3

20m 1:20 0 0.1 0.2 0.5 1m 1.5m
10m 1:50 0 0.5 1 2 4m

WHEN PLOTTED TO A3, SCALE DOUBLES