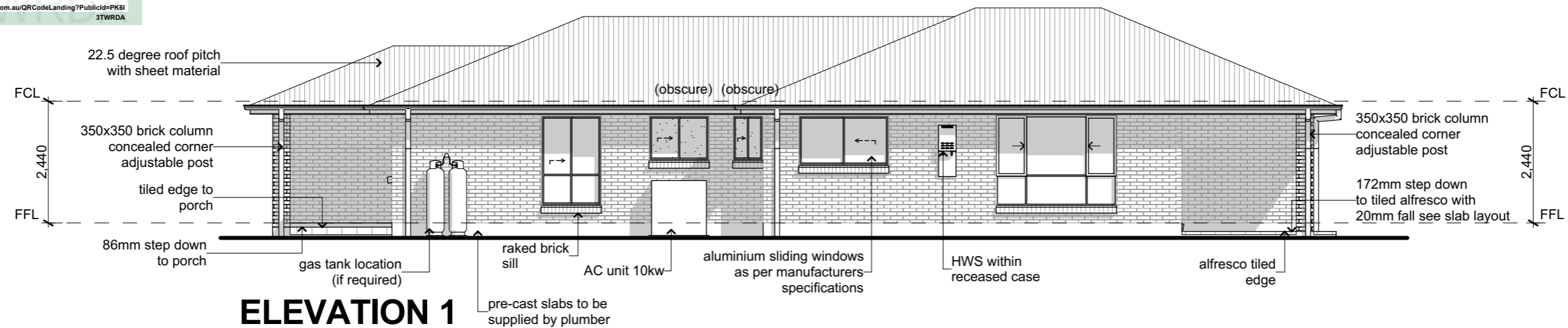
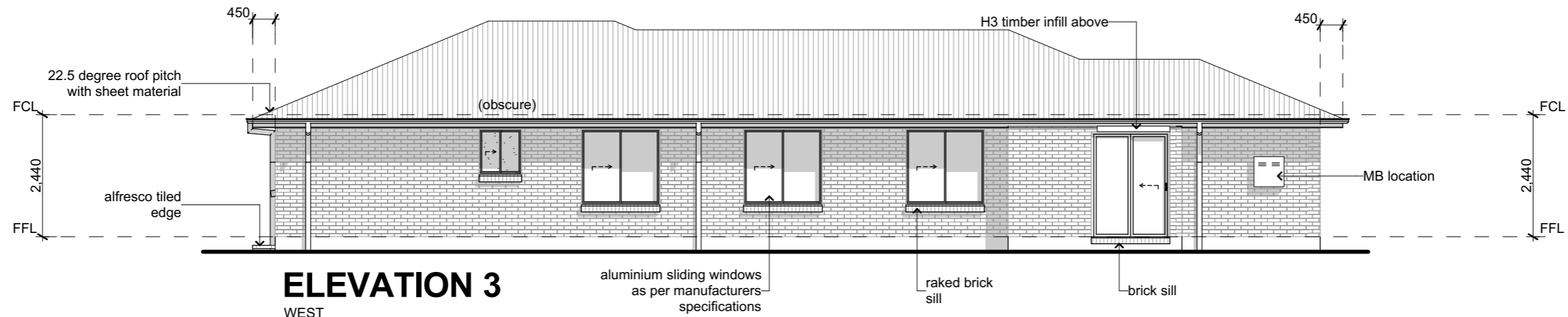


**ELEVATION 2**  
SOUTH



**ELEVATION 1**  
EAST



**ELEVATION 3**  
WEST

drawing title			ELEVATIONS 1-3			
date	issue	description		JOB No.	11166	revision
30.10.23	1	FOR APPROVAL		SCALE	1:100	1
				DRAWN	HM	PAGE
				DATE	30/10/2023	07
				WIND	'N3'	SITE
					'S'	

6.7

NATIONWIDE  
HOUSE

ENERGY RATING SCHEME

102.9

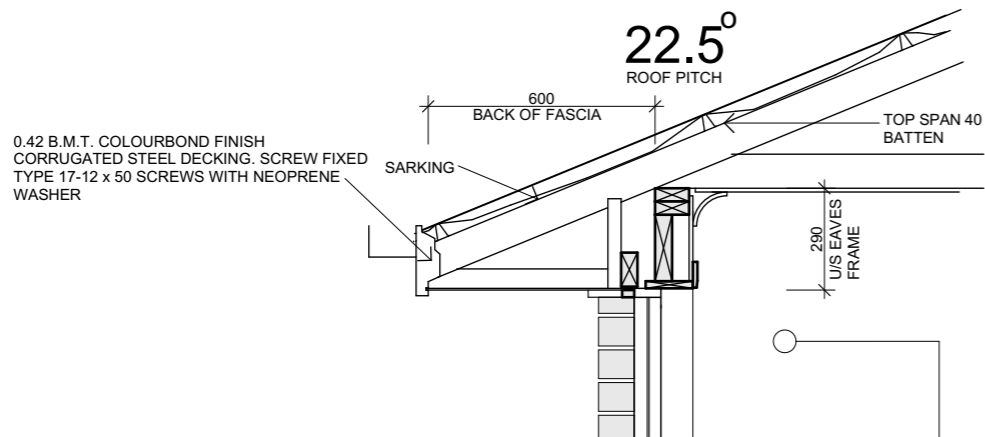
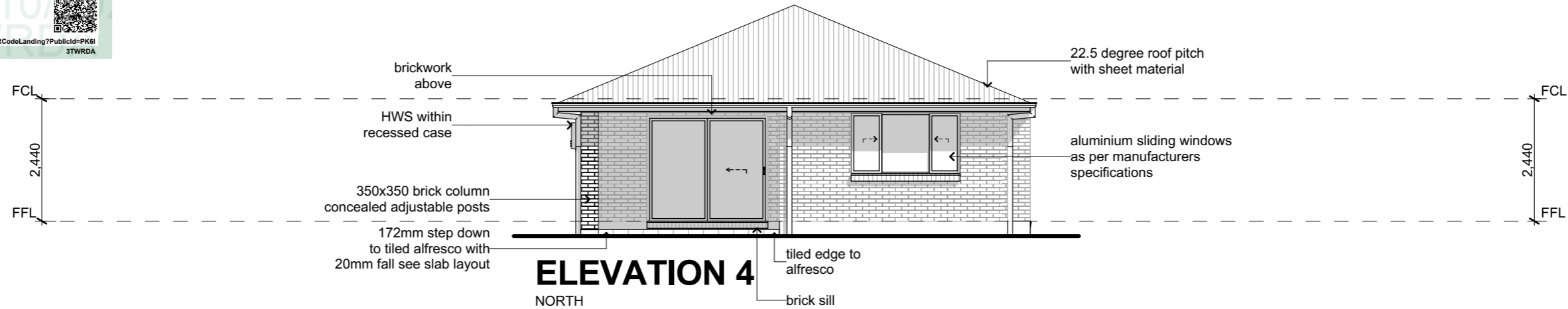
MJ/m<sup>2</sup>

www.nathers.gov.au

PK6I3TWRDA 16 Oct 2023

Assessor  
Accreditation No.  
Address

SANTARITA  
KOLLOSCHKE  
HERA10183  
MUIRHEAD STREET  
BUNDARRA  
NSW 2359  
<https://www.fr5.com.au/QRCodeLanding?PublicId=PK6I3TWRDA>



**Note :** The wind classification of N2 is in accordance with AS1684-2010 , the tie down and bracing details are to be provided to the PCA prior to the relevant inspection

**Note : Termite Protection**  
Termite protection is to be in accordance with AS3660-1 and installed in accordance with manufacturers specifications

**Note : Cabinetry**  
Please refer to internal elevations for cabinetry designs

