

* All Dimensions in mm. Colours shown are examples only. For exact colour samples see your local Totalspan Steel Buildings representative.

* Drawings are not for construction use. Construction drawings will be detailed prior to fabrication.

* Items depicted on the plan and elevations are for illustration purposes and do not imply supply inclusion. Please refer to the quotation and contract specifications for supply inclusions.

Totalspan Retail Pty Ltd
74 Platinum Street, Crestmead, Crestmead,
4132,
Phone: 07 3827 8000
Email: sales@totalspan.com.au

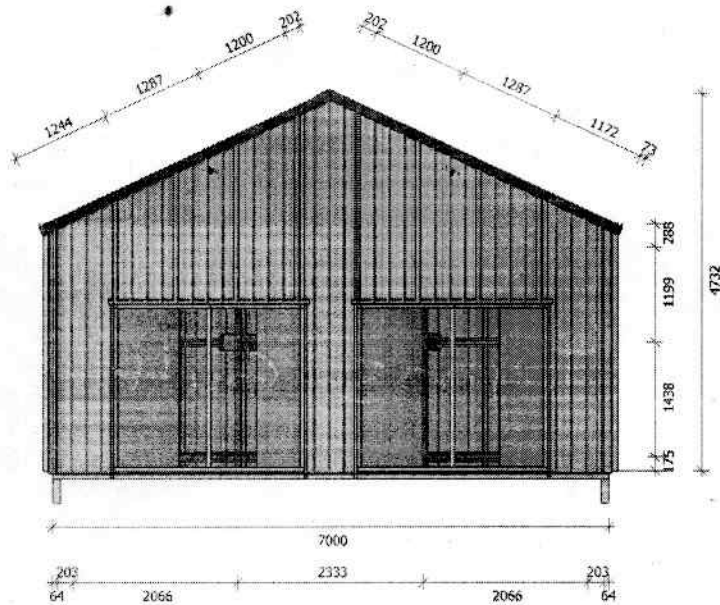
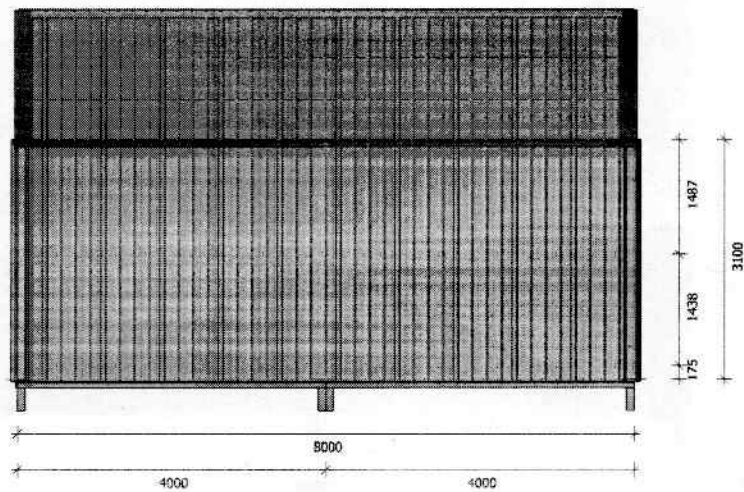
For:
Warren Cook
7110 Thunderbolts Way

Bundarra,
2359

Premier Gable
Project Number: KS.1274907

16 Jan 2024
Page 5 of 6

TOTALSPAN
STEEL BUILDINGS & MORE



* All Dimensions in mm. Colours shown are examples only. For exact colour samples see your local Totalspan Steel Buildings representative.

* Drawings are not for construction use. Construction drawings will be detailed prior to fabrication.

* Items depicted on the plan and elevations are for illustration purposes and do not imply supply inclusion. Please refer to the quotation and contract specifications for supply inclusions.

Totalspan Retail Pty Ltd
74 Platinum Street, Crestmead, Crestmead,
4132,
Phone: 07 3827 8000
Email: sales@totalspan.com.au

For:
Warren Cook
7110 Thunderbolts Way
Bundarra,
2359

Premier Gable
Project Number: KS.1274907

16 Jan 2024
Page 6 of 6

TOTALSPAN
STEEL BUILDINGS & MORE