



MAIN ACCESS  
GATES

Tip Road  
(to Uralla)

Dead Animal /  
Offal Pit

**CAUTION:**

CONTENTS OF LEACHATE DAM SHOULD BE  
CONSIDERED HAZARDOUS TO HUMAN  
HEALTH

AVOID DIRECT SKIN CONTACT AND WASH  
ANY AFFECTED AREAS IMMEDIATELY

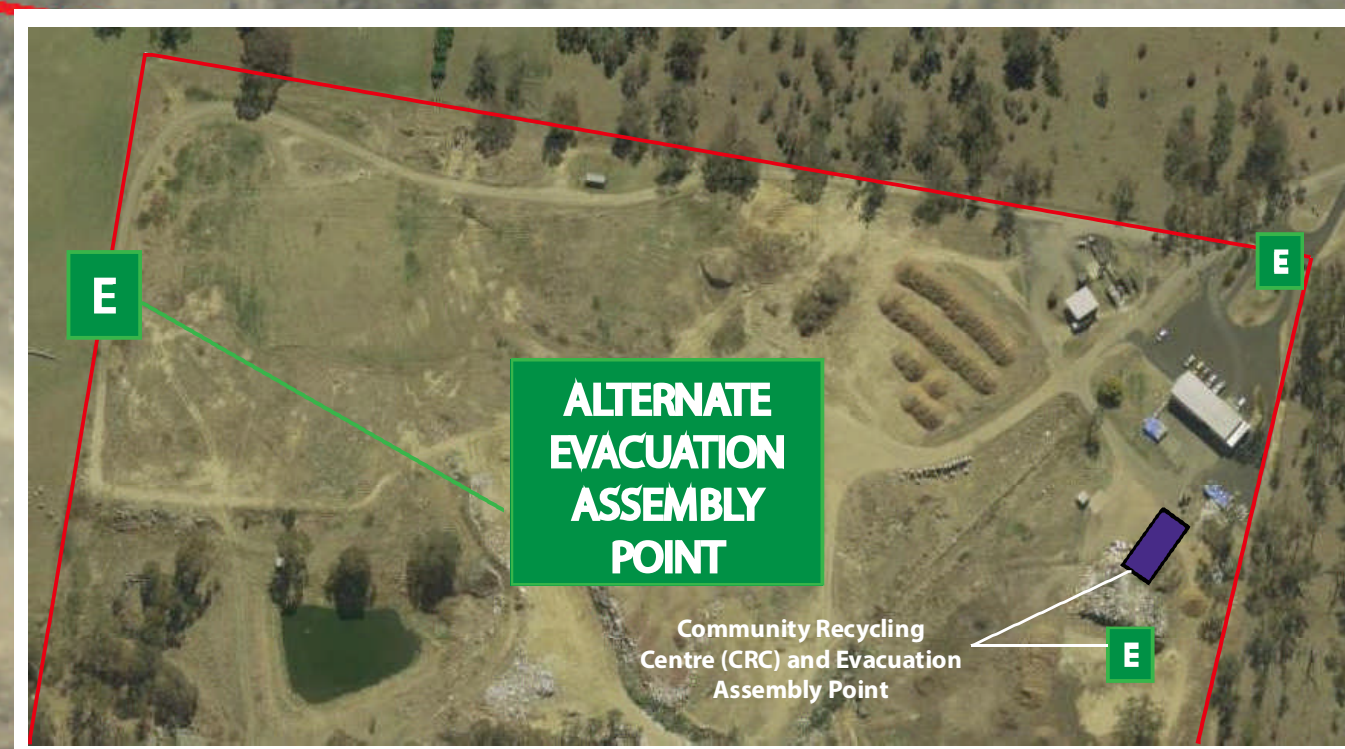
**POLLUTANT LOCATIONS**

**URALLA LANDFILL & RECYCLING FACILITY - EPL 5899**

**LOCATIONS**

- Site Office
- Recycling Centre
- Community Recycling Centre
- Landfilled Areas
- Bunded Oil Tank
- Septic Tank
- Wash Bay
- Asbestos Burial Areas
- Leachate Pump Shed
- Leachate Dam
- Resource Recovery Area
- Recyclables (bale) Storage
- Small Vehicle Transfer Station
- Recyclables Drop Off Bins
- Animal Pound
- Glass Bunkers
- Ancillary Operation**
  - ComputerBank New England





MAIN ACCESS  
GATES

EVACUATION  
ASSEMBLY  
POINT

ComputerBank  
New England

Fire Hydrant /  
Water Supply

Recycling Centre



Site Office



Community Recycling  
Centre (CRC)



1:564  
0 5 10m

## EMERGENCY RESPONSE EQUIPMENT & SITE DETAILS

### Site Office

First Aid Kit  
Fire Extinguishers  
Asbestos Kit/s  
PPE (various)  
Telephone / Internet

### Recycling Centre

First Aid Kit  
Fire Extinguishers

### Community Recycling Centre

Fire Extinguisher  
Dousing Shower  
Chemical Spill Kits

### - NOTE -

*Refer to Evacuation Diagram  
(Site Plan) prepared by  
Dynamic Fire for full details of  
Fire-fighting equipment  
including type / number and  
those supplied areas of site  
not shown here*





Uralla Waste  
Management Centre  
Rowan Avenue,  
Uralla NSW

PREPARED BY DYNAMIC FIRE FOR URALLA SHIRE COUNCIL. USING  
INFORMATION, INPUT & INSTRUCTION PROVIDED BY THE COUNCIL'S  
EMERGENCY PLANNING COMMITTEE (EPC).  
DRAWING No. 5371-DF-EVAC-DIAG-011[A]  
DATE OF ISSUE: 10/11/2020 RENEWAL DATE: 10/11/2025



### IN CASE OF FIRE

- R**EMOVE PEOPLE  
From immediate danger (if safe to do so)
- A**LERT OTHERS  
- Activate a manual call point if present  
- Call 000
- C**ONFINED FIRE & SMOKE  
Close doors and windows (if safe to do so)
- E**VACUATE  
To the Assembly Area



**Mobility impaired persons  
should evacuate  
immediately assisted by a  
nominated person.**

### EVACUATION PROCEDURES

#### STAGE 1: PRE-EVACUATION

ON THE SOUNDING OF A FIRE ALARM (FIRE  
Nearby), PREPARE TO EVACUATE WHEN  
DIRECTED. TAKE ONLY SMALL VALUABLES  
WITH YOU. LEAVE BULKY ITEMS/SCHOOL  
BAGS. ADVISE A **WARDEN** IF YOU REQUIRE  
ASSISTANCE TO EVACUATE.

#### STAGE 2: EVACUATION

WHEN DIRECTED TO LEAVE, TAKE THE  
SAFEST AND MOST DIRECT ROUTE TO THE  
OUTSIDE OF THE BUILDING. FOLLOW THE  
DIRECTIONS OF **WARDENS**. MOVE  
IMMEDIATELY TO THE **ASSEMBLY AREA**.

#### STAGE 2: POST-EVACUATION

REMAIN AT THE **ASSEMBLY AREA** UNTIL  
YOUR SAFE EVACUATION HAS BEEN  
CONFIRMED BY THE **WARDENS**. REPORT  
ANY MISSING OR INJURED PERSONS TO A  
**WARDEN** OR **FIRE OFFICER**

**DO NOT RE-ENTER THE BUILDING UNTIL  
ADVISED BY FIRE OFFICERS.**

### LEGEND:



FIRE EXTINGUISHER - DCP



FIRE EXTINGUISHER - CO<sup>2</sup>



FIRE HYDRANT



FIRE BLANKET



ASSEMBLY AREA



EXIT

### SITE PLAN

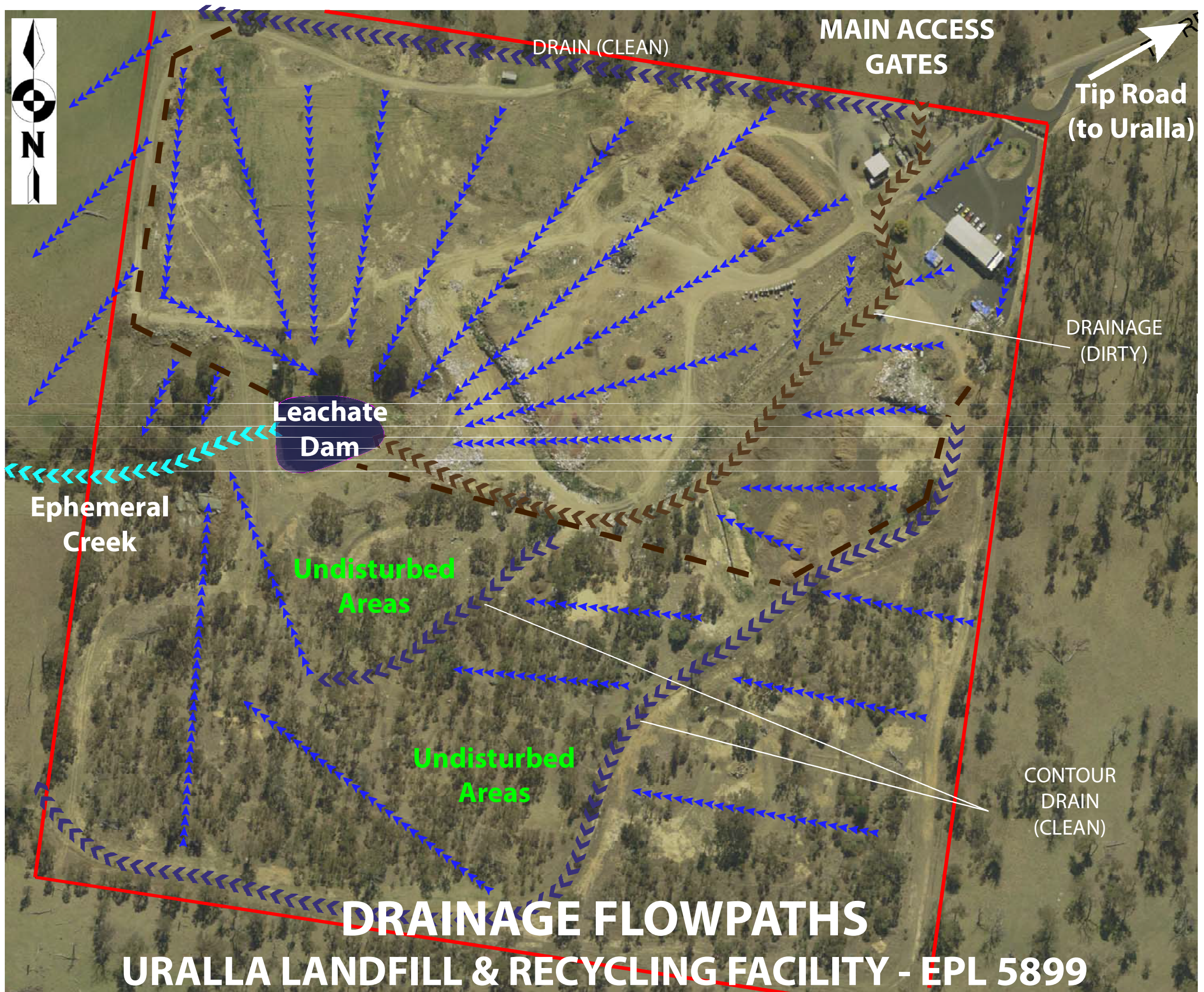


PREPARED BY:



Unit 1 /85 Barnes Street, Tamworth NSW 2340  
Ph 1300 896 499 ABN: 801 348 343 34





## INDICATIVE FLOWS ONLY

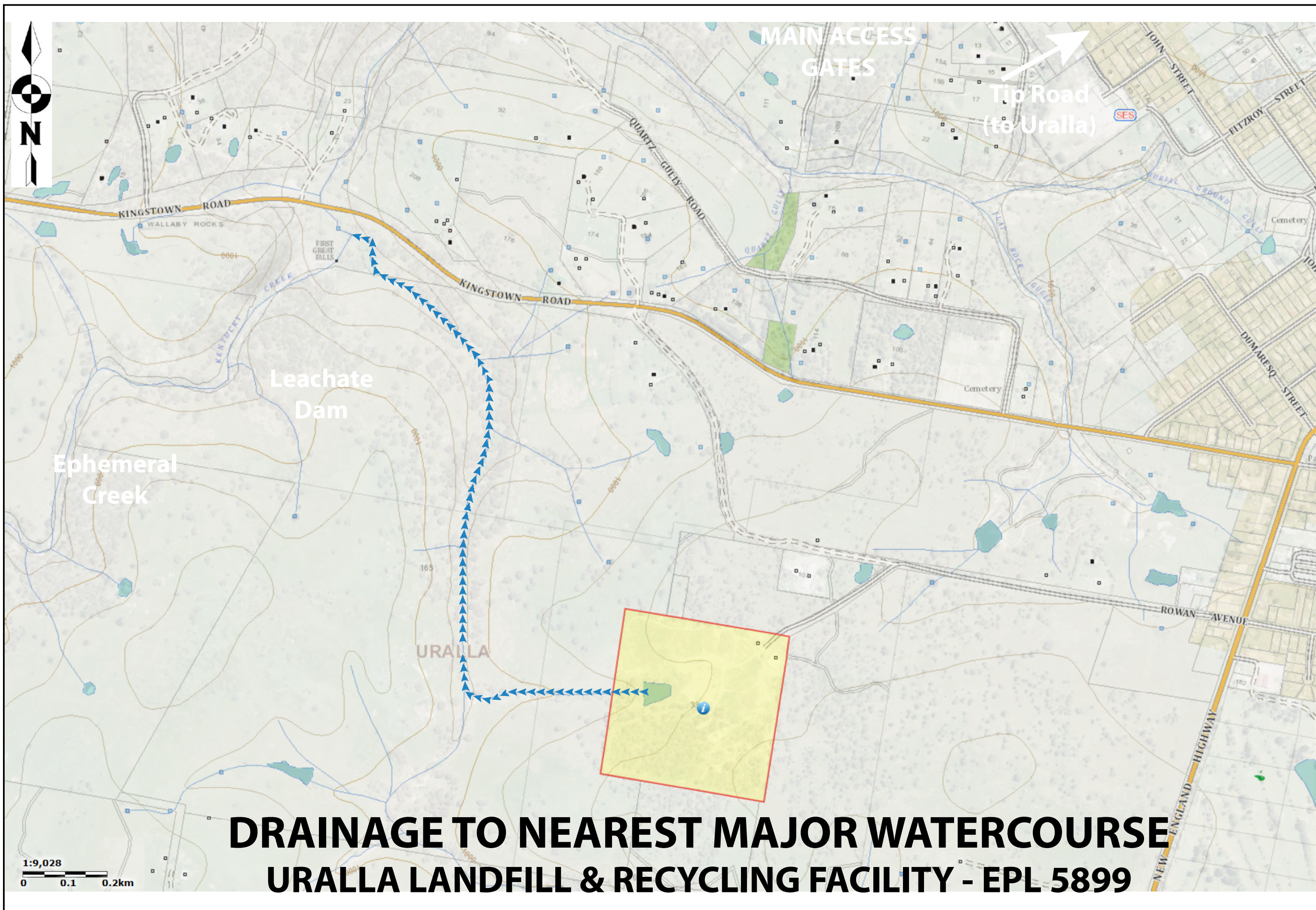
Flowpath directions demonstrate that most on-site water flow is via the leachate dam in the central west of site.

Over time, landfilled areas will be progressively shaped and graded to direct 'clean' surface water flows around the leachate dam.

The central to southern section of the property (essentially 'virgin' or undisturbed land) will be directed to the ephemeral creek which flows off site to the west.

The leachate dam is reported to intercept most overland flows in all but heavy rain events.



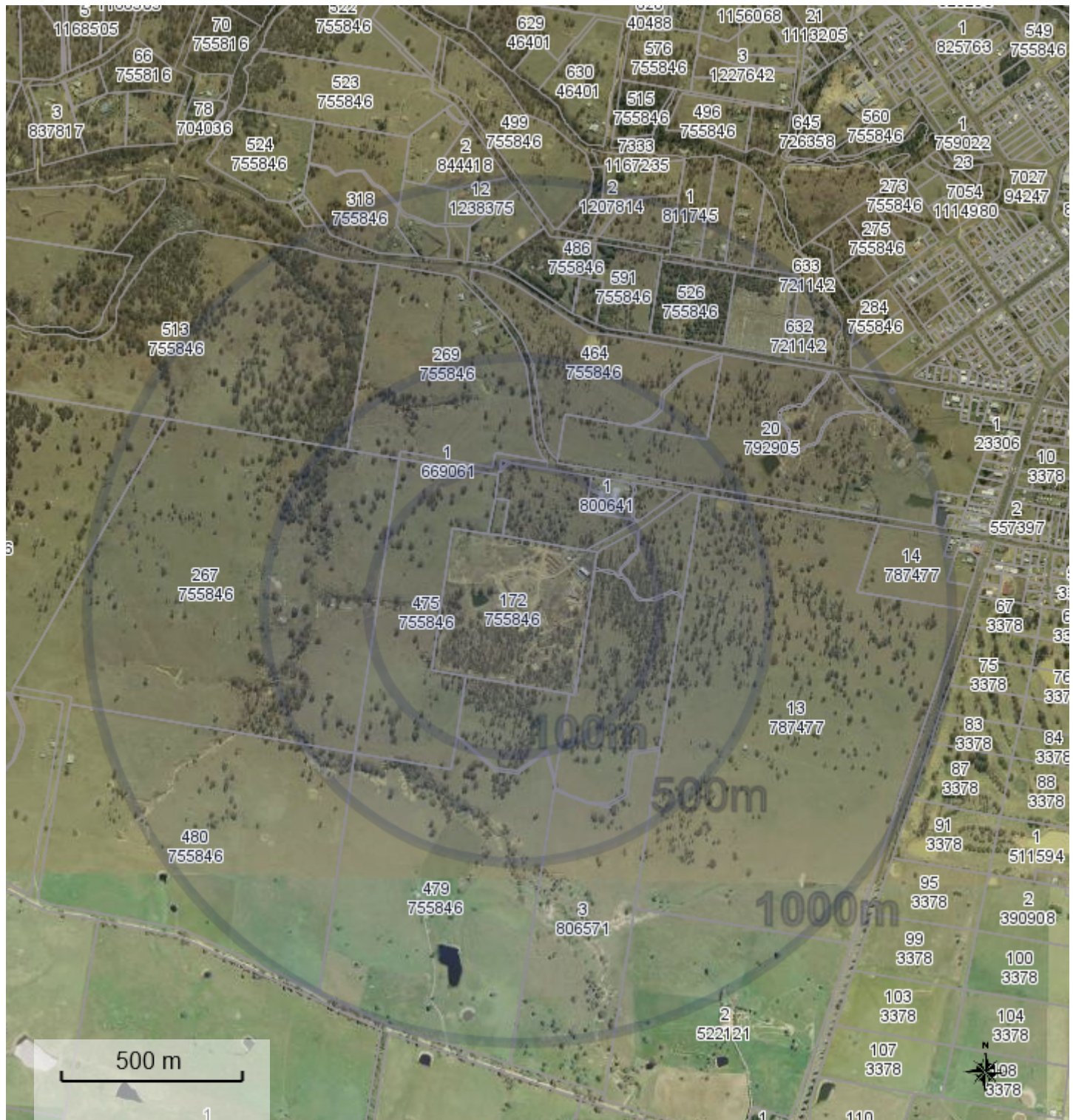




# POTENTIAL AREAS OF IMPACT - PROXIMITY RADII - URALLA LANDFILL

Distances from Property Boundary of Uralla Landfill

24-Nov-2020



Uralla Shire Council  
32 Salisbury Street  
PO Box 106  
URALLA NSW 2358  
Ph: (02) 6878 6300  
Fax: (02) 67786349  
Email:  
council@uralla.nsw.gov.au

## Important Notice!

This map is not a precise survey document. Accurate locations can only be determined by a survey on the ground. This information has been prepared for Council's internal purposes and for no other purpose. No statement is made about the accuracy or suitability of the information for use for any purpose (whether the purpose has been notified to Council or not). While every care is taken to ensure the accuracy of this data, neither the Uralla Shire Council nor the LPI makes any representations or warranties about its accuracy, reliability, completeness or suitability for any particular purpose and disclaims all responsibility and all liability (including without limitation, liability in negligence) for all expenses, losses, damages (including indirect or consequential damage) and costs which you might incur as a result of the data being inaccurate or incomplete in any way and for any reason.

© The State of New South Wales (Land and Property Information),  
© Uralla Shire Council.

Projection : GDA94 / MGA zone 56

Scale = 1:15547.140

## Important

This map was produced on the GEOCENTRIC DATUM OF AUSTRALIA 1994 (GDA94), which has superseded the Australian Geographic Datum of 1984 (AGD66/84). Heights are referenced to the Australia Height Datum (AHD) heights. For most practical purposes GDA94 coordinates and satellite derived (GPS) coordinates based on the World Geodetic Datum 1984 (WGS84) are the same.